

Welcome to the Art Department

Course Overview:

Art is about looking, learning, thinking and communicating. You will develop your understanding of the visual world, learning practical skills and responding to ideas and issues in ways that are personal to your areas of interest. Art encourages self-expression and creativity and can build confidence as well as a sense of individual identity. A Level Art is focused upon creativity and helps to develop lifelong skills in critical thinking, and the ability to interpret the world around us. A-level Art offers students the opportunity to develop and prove their visual literacy. This ability to decipher and explore images is highly beneficial in the multi-media workspaces of an increasingly visual world.

Sixth Form Art students have a dedicated room in which all lessons take place. This provision enables students to access the space and resources during their study sessions. There are facilities for ceramics and print-making alongside bookable spaces for large scale works. There are opportunities for students to visit galleries, work with renowned artists and enter prestigious competitions.

Course Content

A Level Art is an AQA Fine Art course which encompasses a wide variety of skills, techniques and processes supported by relevant contextual research. The course is divided into two components: coursework (60%) and exam (40%) and is marked against four assessment objectives.

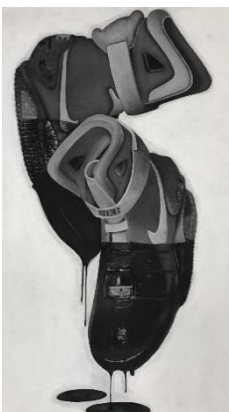
Within the A Level Art Course, students will undertake the following:

Year 12

- The Light Project - Introductory Skills; a series of workshops to gain knowledge
- Thematic Projects: such as Walkways, Concealment or Reflection
- Personal Investigation: An independent project based upon the students' own interests

Year 13

- Continuation of the Personal Investigation
- Year 13: Externally Set Assignment



Course Structure

Project 1: 'Light'

This project focuses on the development of a vast range of skills, such as observational drawing skills, acrylic and oil painting, ceramics, printmaking and mixed media works. This time will be spent developing a project under the 'Light' theme to cover all four assessment objectives.

Project 2: Thematic Project

This project will be completed in a similar format as the Year 13 exam in order to fully prepare students for Component 2 of the course. Students will select a theme from a series of options and complete a project based on the development of their own ideas and concepts, informed by relevant contextual sources. There will be emphasis upon initial observations, the development of ideas informed by artist research and the refinement and evaluative process in the creation of external outcomes.

Personal Investigation

The Personal Investigation is an exciting opportunity for students to begin their own specialised self-directed project based on their chosen area of interest. The investigation should be a coherent, in-depth study that demonstrates each students' ability to construct and develop a sustained line of reasoning from an initial starting point to a final realisation. This will account for 60% of the A Level grade.

Externally Set Assignment

The Externally Set Assignment is released by the exam board and students will be able to choose one theme to base their project on. Following a period of preparatory time, this project will culminate with a 15-hour exam and accounts for 40% of their A Level grade.

Transition Home Learning Task

Mini Project Theme: Home – please bring this work to the first lesson in September

Task 1: Based on your own interpretation of the theme of 'Home', complete one observational drawing of your choice using tonal pencil. This should demonstrate your drawing skills through use of tone, shading, detail and proportion.

Task 2: Create two pieces of work inspired by the theme using different materials. This is entirely your choice but should be demonstrative of mediums that you enjoy working with.

Task 3: Create a response inspired by an artist or movement that you like. Select an artist or movement and create a piece of work in response. This can be completed in a medium of your choice and should show a connection to the theme of 'Home'.

